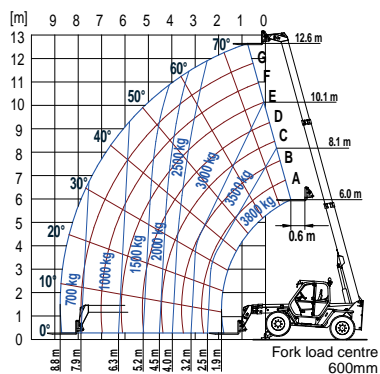


PANORAMIC WITH STABILIZERS

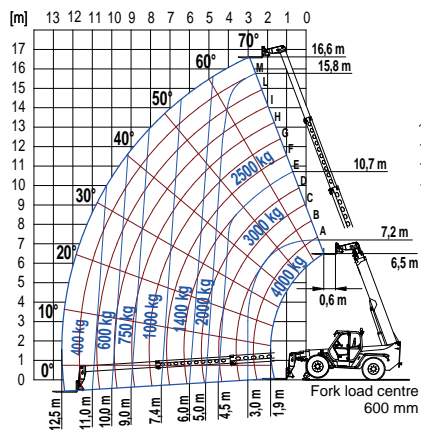
Panoramic with stabilizers

First in performance and reliability.
Maximum stability within the minimum space!

P 38.13 WITH FORKS ON STABILIZERS



P 40.17 WITH FORKS ON STABILIZERS



The unique Merlo design ensures good weight balance which, together with versatile drive/steer axles, extraordinary ground clearance, permanent 4WD and road travel at up to 40 km/h (25 km/h for the P38.13), ensure unrivalled driving ability in the most challenging of ground conditions. The Panoramic telehandlers feature a brilliant boom side-shift system uniquely developed by Merlo. The operator controls the resulting sideways movement of the load with great accuracy. Two hydraulically operated stabilizers on the front axle ensure the necessary stability and allow the machine to be fully operational on uneven or sloping grounds. The operator can place the stabilizers independently upon the ground and use them to level the chassis. Two most important models are available in Australia are the P38.13 Standard and PLUS (compact, user-friendly and versatile) and P40.17 (the flagship, with power, load capacities, and lift heights that are industry standards.).

- ✓ P38.13 Maximum Load capacity: 3800 kg. Maximum Lift Height: 12.6 m.
- ✓ P40.17 Maximum Load capacity: 4000 kg. Maximum Lift Height: 16.7 m.
- ✓ EE models are powered by 4 cyl. Engine 100 HP suitable power Tier 3.
- ✓ PLUS models are powered by 4 cyl. Engine 101 HP suitable power Tier 4 interim.
- ✓ Frame levelling system: allows the chassis to be horizontally levelled ensuring a truly vertical lift for better stability.
- ✓ Front hydraulic stabilizers: independently controlled, improve the machines stability.
- ✓ Boom side shift system: load can be placed with max. accuracy. It saves time and boosts productivity.
- ✓ The suspension systems (boom or front axle) ensure maximum comfort.
- ✓ Cab: it is the largest of this vehicle class with 360° visibility.
- ✓ Fork carriage: allows attachments to be quickly interchanged by the quick attach system and locked using Tac-Lock controls in the cab.
- ✓ Hydraulic service fitted with quick couplings provides the power for hydraulically-operated equipment.

